



## BASE-MINI INSTRUCTION MANUAL

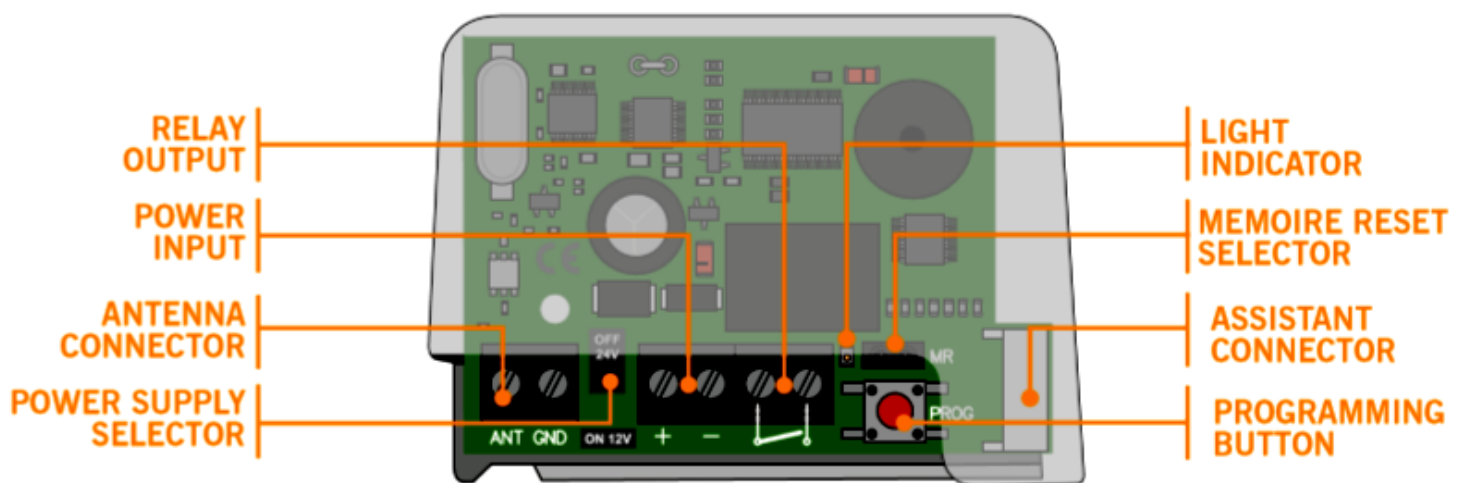
### Safety Instructions

In compliance with the European Low Voltage Directive, we inform you of the following requirements:

- Disconnect power supply before any handling of the device.
- When the devices remain permanently connected, an easily accessible connecting device must be incorporated into the wiring.
- This system must only be installed by qualified professionals that have with automated garage doors and knowledge of the relevant European standards.
- The user instructions for this device must always be in the user's possession.
- The operating frequency of the receiver does not interfere in any way with the 868 MHz remote control systems.

### General Description

Minature receiver for managing an automated door with Motion Transmitters



Its small size, versatile power supply and its 500 code memory allow its use not only in industrial installations but also in community and residential installations

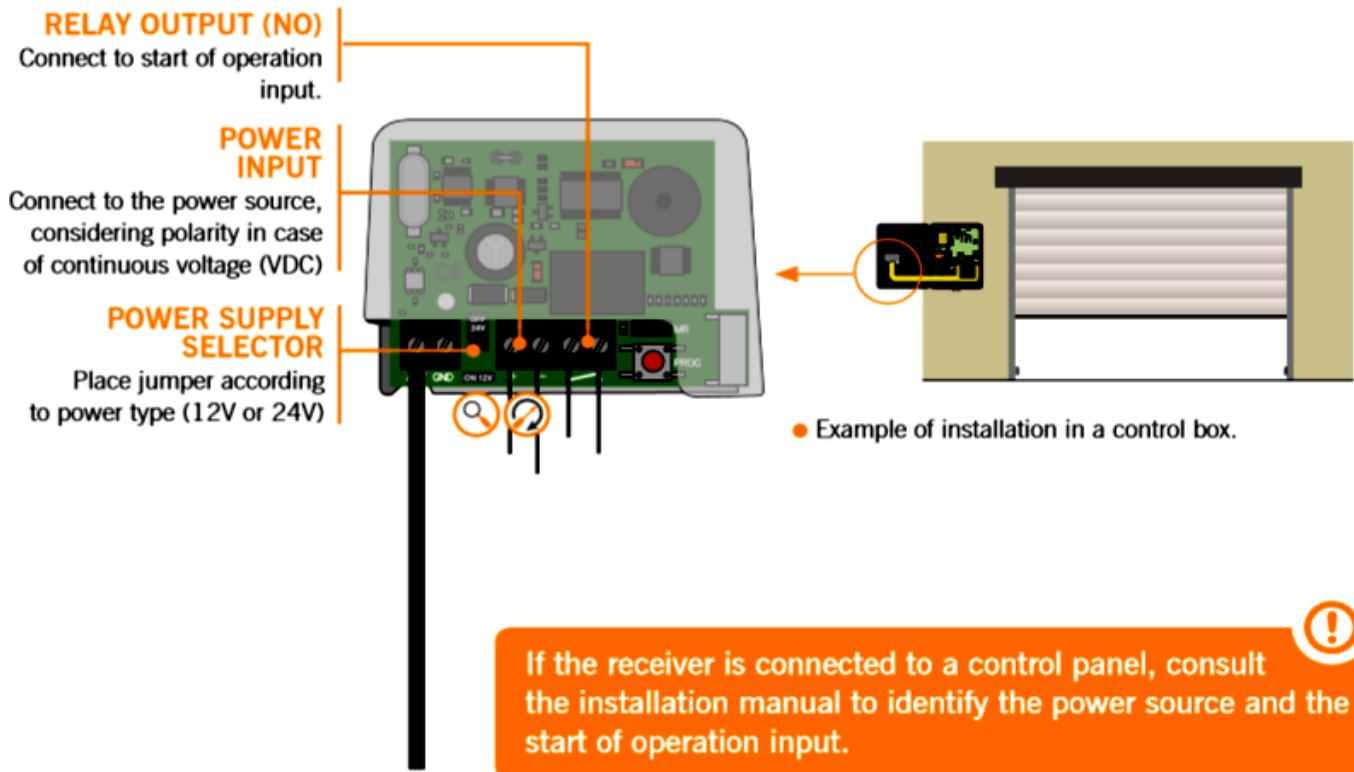
C Prox Ltd — Inc. Quantek

Unit 11 Callywhite Business Park, Callywhite Lane, Dronfield, S18 2XP

☎ 01246 417113 ✉ sales@cproxltd.com @ www.quantek.co.uk

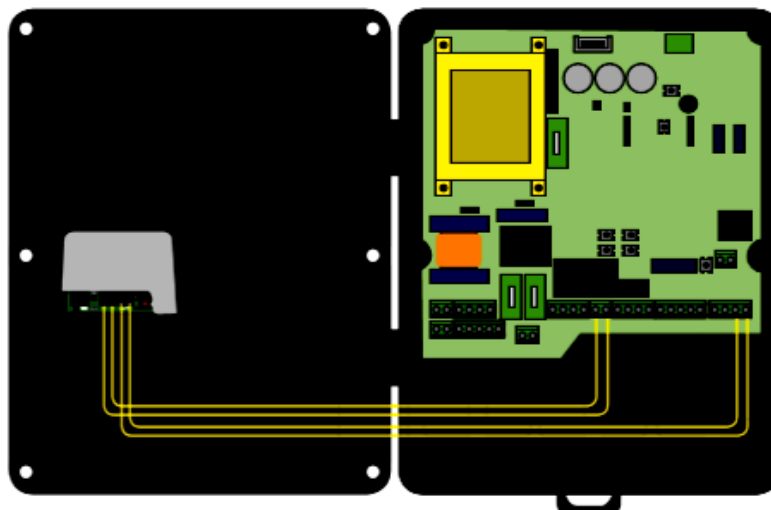


## Wiring



## Mounting

The receiver is easily installed inside a control panel



● Example of connection to the Versus panel.

It is protected from the other components by its plastic casing

It is recommended to install the receiver away from the power source in the control panel and any existing radio frequency devices.

If using the supplied monopole antenna, place it straight to optimise reception.

C Prox Ltd — Inc. Quantek

Unit 11 Callywhite Business Park, Callywhite Lane, Dronfield, S18 2XP

☎ 01246 417113 ✉ sales@cproxltd.com @ www.quantek.co.uk

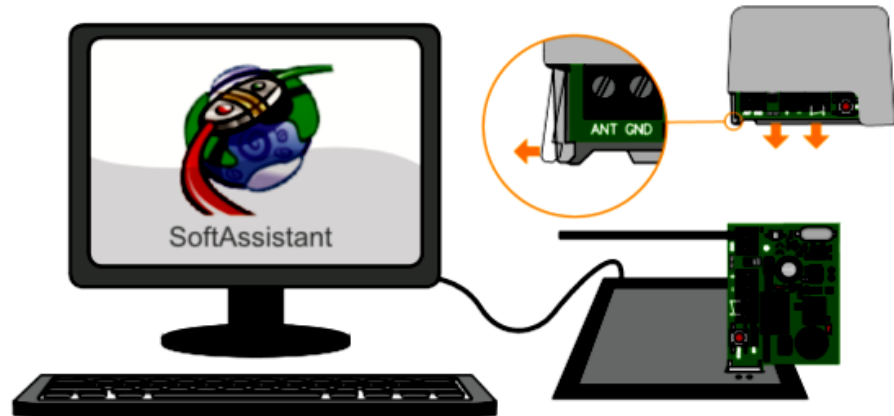


## Settings

### Options

Parameter	Options
Relay output	Pulse (by default)/Bi-stable
Filtering by FREE system group	No (by default) / 0 / 1 / 2 / 3 / 4 / 5 / 6 / 7

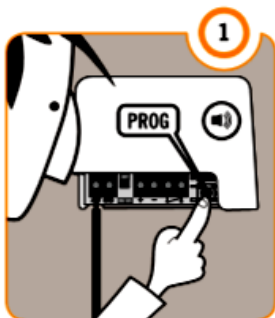
If you wish to **modify the default options**, you must install the Soft Assistant software for Windows.



For further information please look at our Programming Products—PROGMAN & SOFT ASSISTANT

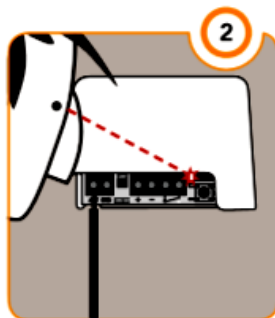
## Programming

Manual programming of a transmitter



### PROGRAMMING PUSH BUTTON

You will hear a beep for 1 second after pressing it.



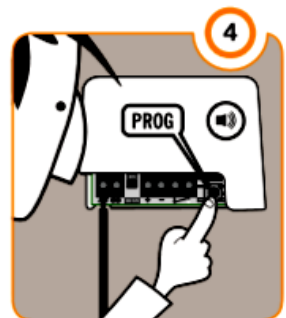
### LED INDICATOR

It turns on when the programming mode is active.



### TRANSMITTER PUSH BUTTON

Each time that a transmitter channel is programmed, you will hear a beep for 0.5 seconds.



### PROGRAMMING PUSH BUTTON

Press the button again to quit programming mode. You will hear a beep for 1 second.

**!** If the memory is full, the receiver will keep 7 times for 0.5 second and quit programming mode.

**!** If 10 seconds go by without programming, the receiver will quit programming mode and you will hear two beeps of 1 second.

C Prox Ltd — Inc. Quantek

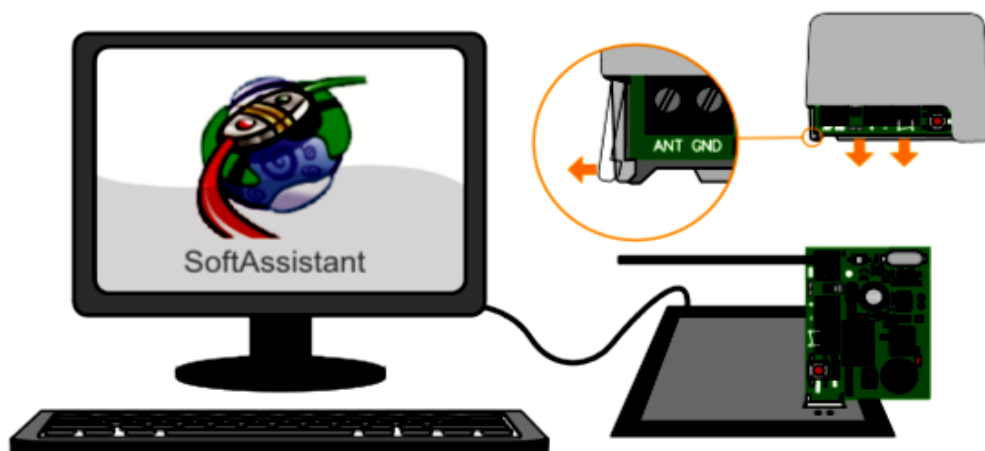
Unit 11 Callywhite Business Park, Callywhite Lane, Dronfield, S18 2XP

☎ 01246 417113 ✉ sales@cproxltd.com @ www.quantek.co.uk



## Programming several transmitters (optional)

If you wish to program several transmitters at the same time, you must install the Soft Assistant software for Windows.

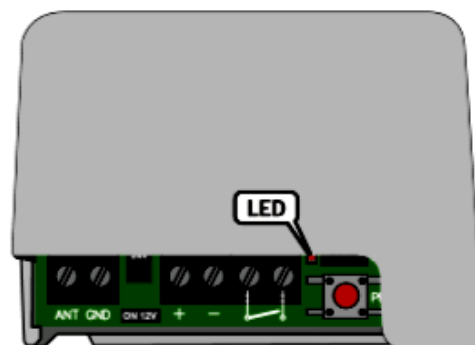


For further information please look at our Programming Products—PROGMAN & SOFT ASSISTANT

## Verification

### LED Indicators

Start-up	
Number of flashes	FREE group information
0	Disabled / Group 0
1	Group 1
2	Group 2
3	Group 3
4	Group 4
5	Group 5
6	Group 6
7	Group 7



The flashes are short (0.5 sec). After that the indicator turns on again for 5 seconds more and turns off, indicating that the star-up has finished.

While the receiver is in stand-by, the indicator flashes shortly each 5 seconds.

C Prox Ltd — Inc. Quantek

Unit 11 Callywhite Business Park, Callywhite Lane, Dronfield, S18 2XP

☎ 01246 417113 ✉ sales@cproxltd.com @ www.quantek.co.uk

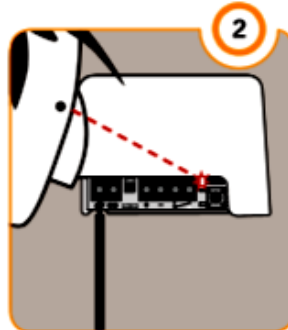
## Manual Memory Management

### Removing Transmitter



#### PROGRAMMING PUSH BUTTON

You will hear a beep for 1 second when you press it.



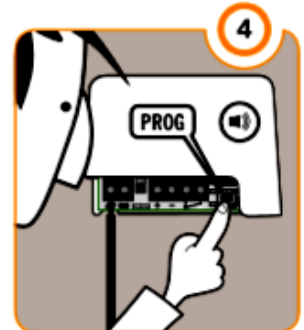
#### LED INDICATOR

This comes on when programming mode is active.



#### TRANSMITTER

Press the channel of the transmitter to be removed while shortcutting the memory reset jumper. You will hear a beep lasting 0.5 second.



#### PROGRAMMING PUSH BUTTON

Press the button again to quit programming mode. You will hear a beep lasting 1 second.



The manual removal of a transmitter is similar to its programming. Check that you have obtained the desired result.

### Deleting All Memory



#### PROGRAMMING PUSH BUTTON

Keep it pressed down.



#### MEMORY RESET KEY

Without releasing the programming push button, shortcut the memory reset jumper. You will hear a burst of beeps.



#### DELETION COMPLETED

Keep pressing and shortcutting until you hear a long beep indicating deletion completed.



#### PROGRAMMING KEY

Press the push button again to quit programming mode. You will hear a beep for 1 second.



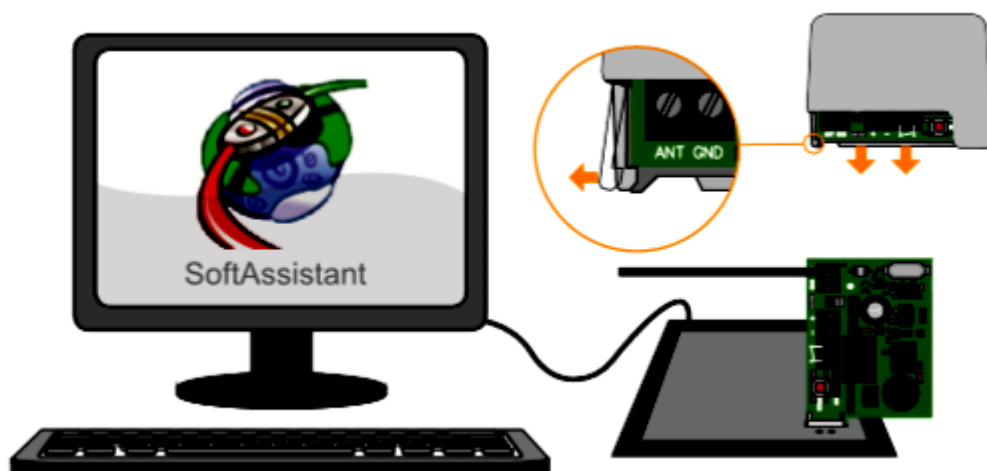
If 10 seconds go by without programming, the receiver will quit programming mode and you will hear two beeps of 1 second.





## Managing the memory with Sift Assistant (Optional)

If you wish to manage the authorisation, replacement or cancellation of new transmitters, supervision or total deletion of memory, you must install the Soft Assistant software for Windows.



For further information please look at our Programming Products—PROGMAN & SOFT ASSISTANT

## FAQ

**Q: How many codes can be stored in the BASE MINI memory?**

**A:** 500 codes. The device has an internal memory of 500 codes which cannot be extended or reduced.

**Q: How do you know that the receiver is powered?**

**A:** When you see the LED indicator flashing every 5 seconds.

**Q: I cannot find the memory card for connecting to the Assistant programming tool. Is it possible to manage with Soft Assistant? How are the codes saved?**

**A:** Yes, that is possible. The codes are saved by connecting the electronic board in the slot of the Assistant tool using the white connector.

**Q: Can the device be blocked so that no one can delete and/or program more commands?**

**A:** Yes, by saving the memory with Soft Assistant and previously marking the "Prohibit programming via radio" and "Prohibit manual programming" options in the Application / Settings menu.

**Q: How do you know that the device is blocked?**

**A:** When you press the PROG button and the receiver does not transmit the beep indicating that it is entering programming mode.

**Q: How many relay outputs does this receptor have?**

**A:** It has one relay output

**Q: Can proximity readers be connected to this receiver?**

**A:** No, it can only be radio controlled.

**Q: Can the Free system groups be managed with this receiver?**

**A:** Yes, you need to configure the group manually or using the Soft Assistant in the Structure/Setting tab.

C Prox Ltd — Inc. Quantek

Unit 11 Callywhite Business Park, Callywhite Lane, Dronfield, S18 2XP

☎ 01246 417113 ✉ sales@cproxltd.com @ www.quantek.co.uk



## Technical Data

### Electrical parameters

Power supply	12/24Vdc/ac
Stand-by/operation consumption	<50 mA / 100 mA
Maximum power consumption	5W
Relay power	3A
Memory capacity	500 codes

### Physical parameters

Operating temperature	-20°C ... +55°C
Size	60 x 44 x 18

### Radio frequency parameters

Frequency	Motion 868,35 MHz
Coding	High security changing code
Radiated power	< 25mW

## Notes



C Prox Ltd — Inc. Quantek

Unit 11 Callywhite Business Park, Callywhite Lane, Dronfield, S18 2XP

☎ 01246 417113 ✉ sales@cproxltd.com @ www.quantek.co.uk